

Coffin Butte Landfill

A Regional Landfill Owned and
Operated by Republic Services



Location

- 28971 Coffin Butte Road
- On Hwy 99 about 10 miles north of Corvallis
- Monday-Saturday, 8am-5pm

History

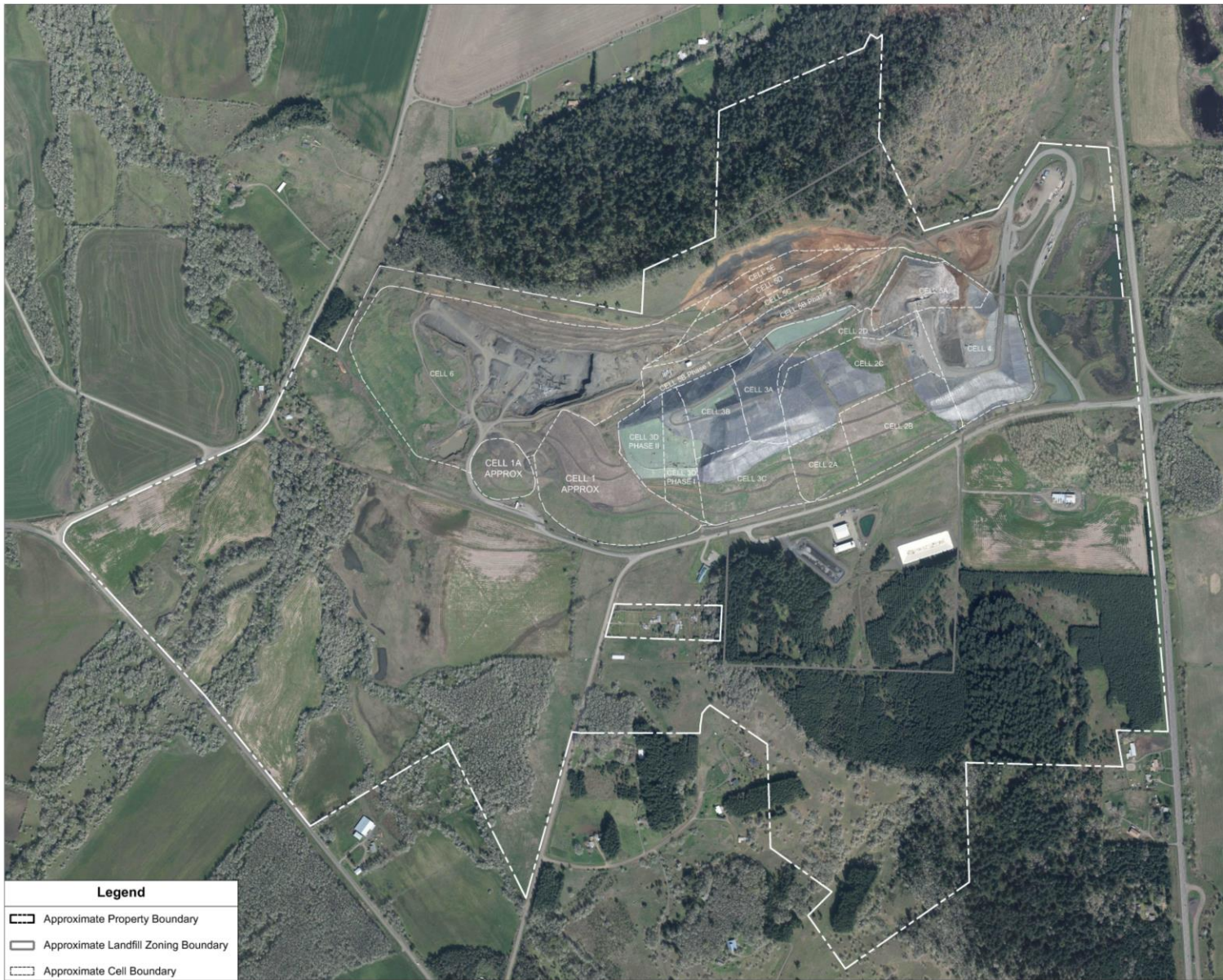
- WWII dump site – Camp Adair 1944-45
- 40s-70s – clay liner
- 80s - Regional landfill, subtitle D, RCRA
- 2000-Allied Waste Procured landfill
- 2008 merger

Specs

Regional Landfill



- 700 acres in total
- 140 permitted for holding waste
- 3 restored wetland areas
- 2 leachate cells



Legend

-  Approximate Property Boundary
-  Approximate Landfill Zoning Boundary
-  Approximate Cell Boundary



REPUBLIC SERVICES

Coffin Butte Landfill

0 300 600 1200 Feet
Date of Photography: March 31, 2016



Usage

- ~2000 tons/day
- ~500,000 tons/year
 - MSW: 340,000 tons
 - C&D: 25,000 tons
 - Special Waste: 135,000 tons
- Electricity (300+ gas wells)
- Linn, Benton, Polk, Lincoln
 - Marion, Metro Region
 - Douglas, Coos, Tillamook



Monitoring and Other Requirements

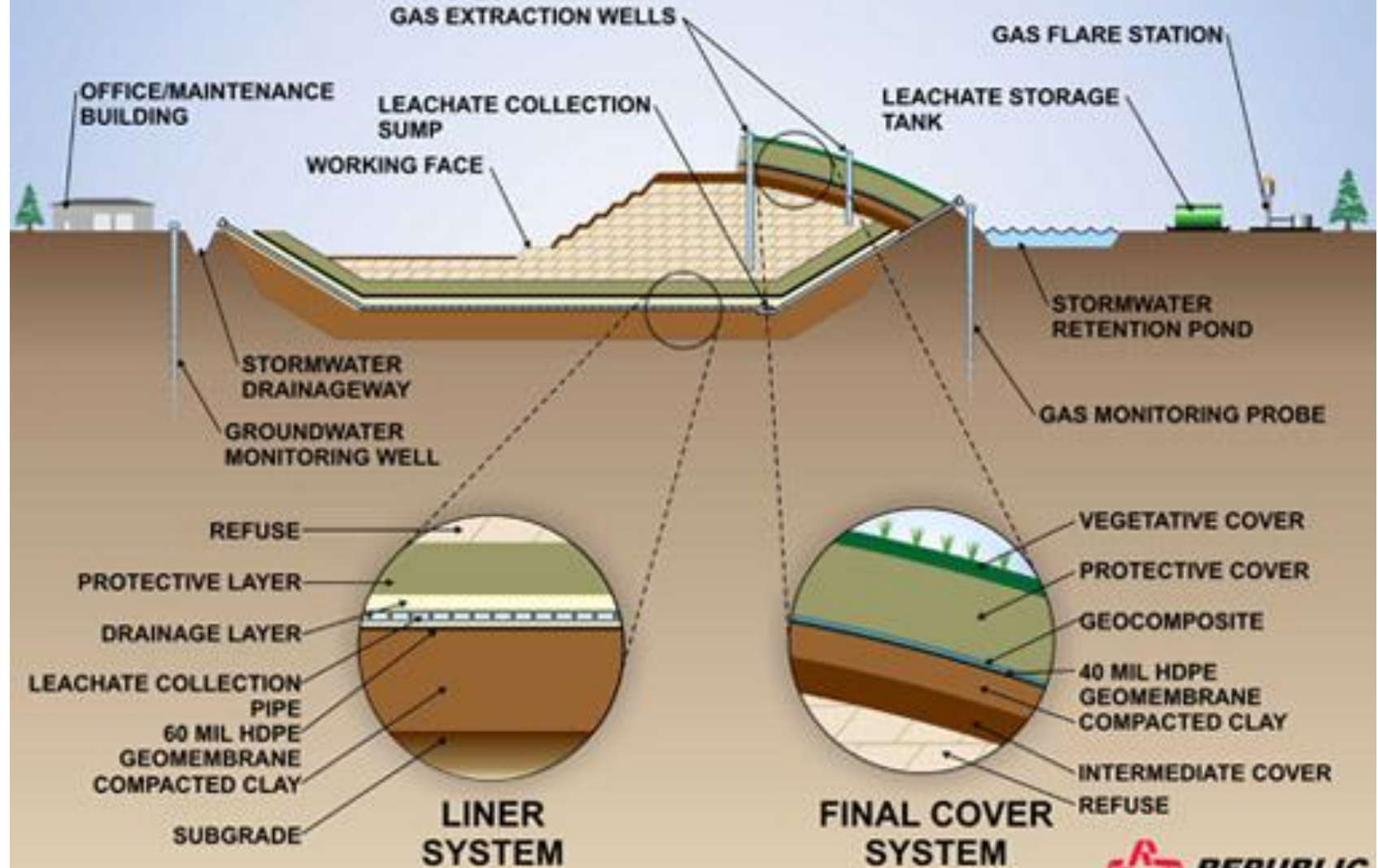
- Ground and surface/storm water
- Air quality
- ADC 12"
- Leachate collection/disposal

Features and Structure



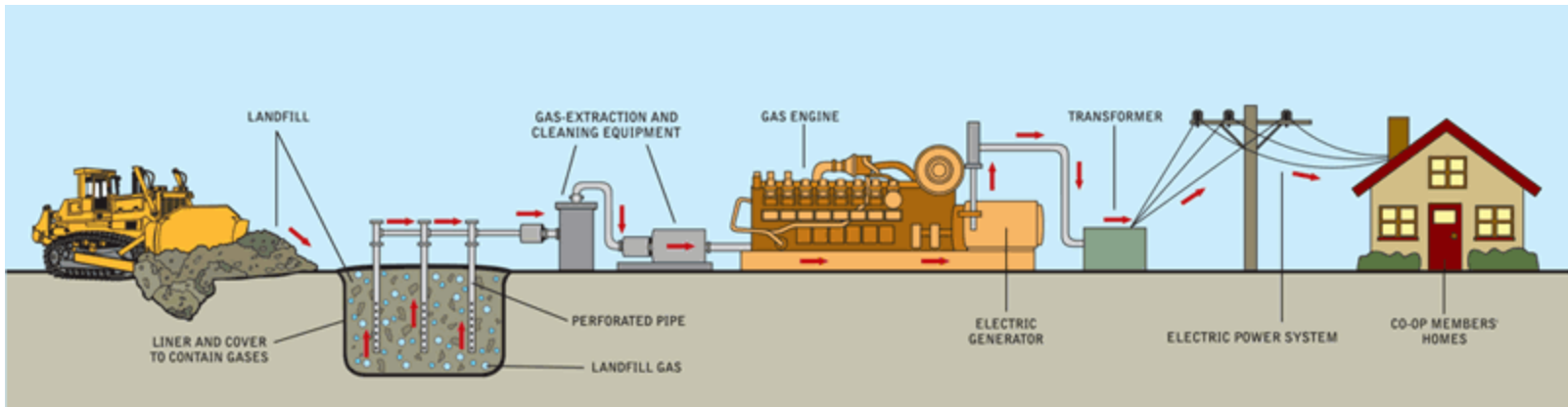
- Leachate collection
- Life span
- Cells
- Liner heat welded, pressure/stress test
- ADC

CONCEPTUAL LANDFILL DESIGN CROSS SECTION



Energy Generation

- 300+ Gas wells
- 4,000+ homes



What Do We Take?

- Municipal Solid Waste
- Special Waste
 - Asbestos
 - Industrial Waste
 - Environmental Cleanup Material
 - Contaminated Soil
 - WWTP Waste

What Do We Take?

Recycling Items

- Commingle
- Glass
- Cardboard
- Tires*
- E-waste
- Car batteries
- Appliances*
- Yard debris*

**for a fee*

Questions?

